

**PLANT SCHEDULE**

KEY	QTY	BOTANICAL NAME	COMMON NAME	PLANTED SIZE / REMARKS
TREE				
3	ACER PALMATUM	JAPANESE MAPLE	6CM CAL, 1M STD, B&B	
2	ACER RUBRUM 'RED SUNSET'	RED SUNSET MAPLE	10CM CAL, 2M STD, B&B	
8	AMELANCHIER x GRANDIFLORA 'AUTUMN BRILLIANCE'	AUTUMN BRILLIANCE SERVICEBERRY	6CM CAL, B&B, 3 STEM CLUMP	
2	CERCIDIPHYLLUM JAPONICUM	KATSURA TREE	9CM CAL, 1.8M STD, B&B	
14	CORNUS KOUSA 'CHINENSIS'	CHINESE KOUSA DOGWOOD	3.5M HT, BUSH FORM, B&B	
4	LIQUIDAMBAR STYRACIFLUA 'SLENDER SILHOUETTE'	SLENDER SILHOUETTE SWEETGUM	8CM CAL, 2M STD, B&B	
6	LIQUIDAMBAR STYRACIFLUA 'WORPLESDON'	WORPLESDON SWEET GUM	9CM CAL, 2M STD, B&B	
3	PINUS NIGRA 'ARNOLD SENTINEL'	ARNOLD SENTINEL AUSTRIAN BLACK PINE	4M HT, B&B	
3	PSEUDOTSUGA MENZIESII	DOUGLAS FIR	4M HT, B&B	
7	PYRUS CALLERYANA 'CHANTICLEER'	CHANTICLEER PEAR	8CM CAL, 1.5M STD, B&B	
7	QUERCUS PALUSTRIS 'GREEN PILLAR'	GREEN PILLAR PIN AK	6CM CAL, 1.8M STD, B&B	
TREE-OFFSITE				
14	STREET TREE			

NOTES: \* PLANT SIZES IN THIS LIST ARE SPECIFIED ACCORDING TO THE BC LANDSCAPE STANDARD AND CANADIAN LANDSCAPE STANDARD, LATEST EDITION. CONTAINER SIZES SPECIFIED AS PER CNLA STANDARD. BOTH PLANT SIZE AND CONTAINER SIZE ARE THE MINIMUM ACCEPTABLE SIZES. \* REFER TO SPECIFICATIONS FOR DEFINED CONTAINER MEASUREMENTS AND OTHER PLANT MATERIAL REQUIREMENTS. \* SEARCH AND REVIEW: MAKE PLANT MATERIAL AVAILABLE FOR OPTIONAL REVIEW BY LANDSCAPE ARCHITECT AT SOURCE OF SUPPLY. AREA OF SEARCH TO INCLUDE LOWER MAINLAND AND FRASER VALLEY. \* SUBSTITUTIONS: OBTAIN WRITTEN APPROVAL FROM THE LANDSCAPE ARCHITECT PRIOR TO MAKING ANY SUBSTITUTIONS TO THE SPECIFIED MATERIAL. UNAPPROVED SUBSTITUTIONS WILL BE REJECTED. ALLOW A MINIMUM OF FIVE DAYS PRIOR TO DELIVERY FOR REQUEST TO SUBSTITUTE. SUBSTITUTIONS ARE SUBJECT TO BC LANDSCAPE STANDARD AND CANADIAN LANDSCAPE STANDARD - DEFINITION OF CONDITIONS OF AVAILABILITY. \* ALL LANDSCAPE MATERIAL AND WORKMANSHIP MUST MEET OR EXCEED BC LANDSCAPE STANDARD AND CANADIAN LANDSCAPE STANDARD LATEST EDITION. \* ALL PLANT MATERIAL MUST BE PROVIDED FROM CERTIFIED DISEASE FREE NURSERY. \* BIO-SOLIDS NOT PERMITTED IN GROWING MEDIUM UNLESS AUTHORIZED BY LANDSCAPE ARCHITECT.

63 TREES REMOVED, 59 REPLACEMENT TREES



©Copyright reserved. This drawing and design is the property of PMG Landscape Architects and may not be reproduced or used for other projects without their permission.



SEAL:

NO.	DATE	REVISION DESCRIPTION	DR.
5	19 JUN 24	TREE MANAGEMENT PLAN UPDATED	RJ
4	19 JUN 21	NEW SITE PLAN	RJ
3	19 MAY 24	TREE MANAGEMENT PLAN UPDATED	RJ
2	19 MAY 14	ISSUED FOR OP	RJ
1	19 APR 26	NEW SITE PLAN	RJ

CLIENT:

**BOHAN**  
PROPERTIES

PROJECT:

**TOWNHOUSE DEVELOPMENT**

10140, 10160, 10180 NO. 1 ROAD  
AND 4051, 4068 CAVENDISH DRIVE  
RICHMOND, BC

DRAWING TITLE:  
**LANDSCAPE PLAN**

DATE:	19 JAN 31	DRAWING NUMBER:	
SCALE:	1/16"=1'-0"		
DRAWN:	RJ		
DESIGN:	RJ		
CHK'D:	PCM		

**L1**

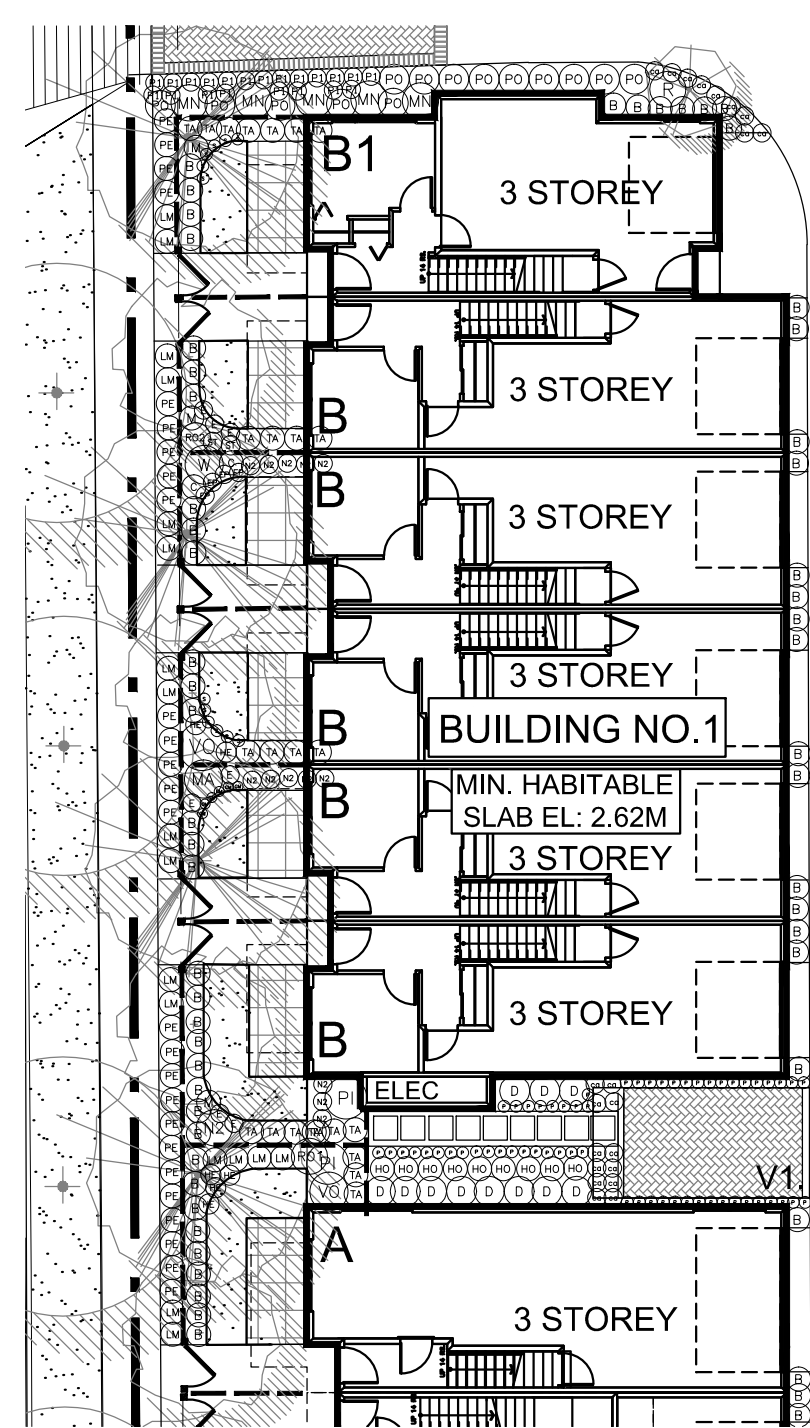
OF 8

19013-6

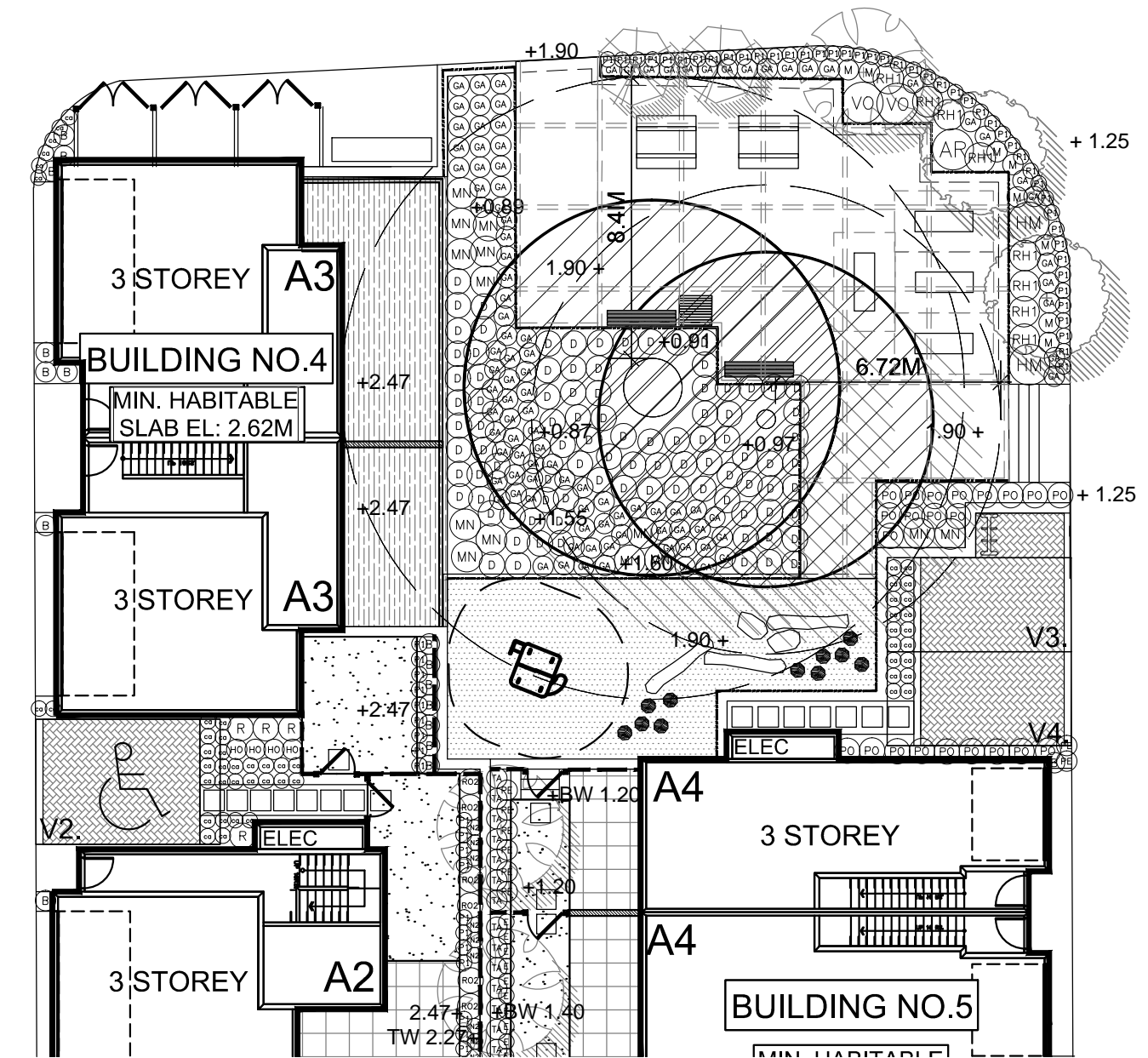
PMG PROJECT NUMBER:

19-013

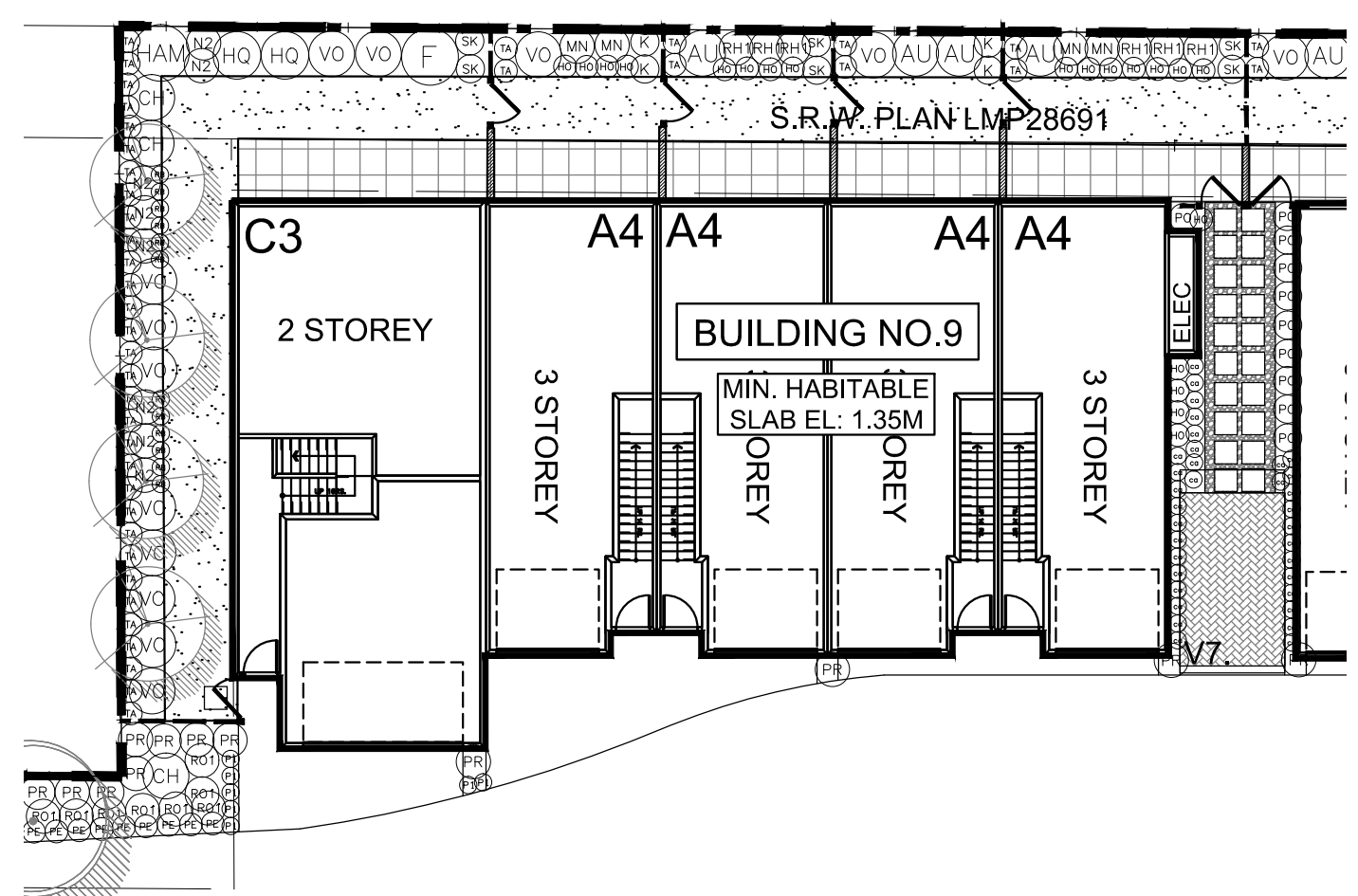
SEAL:



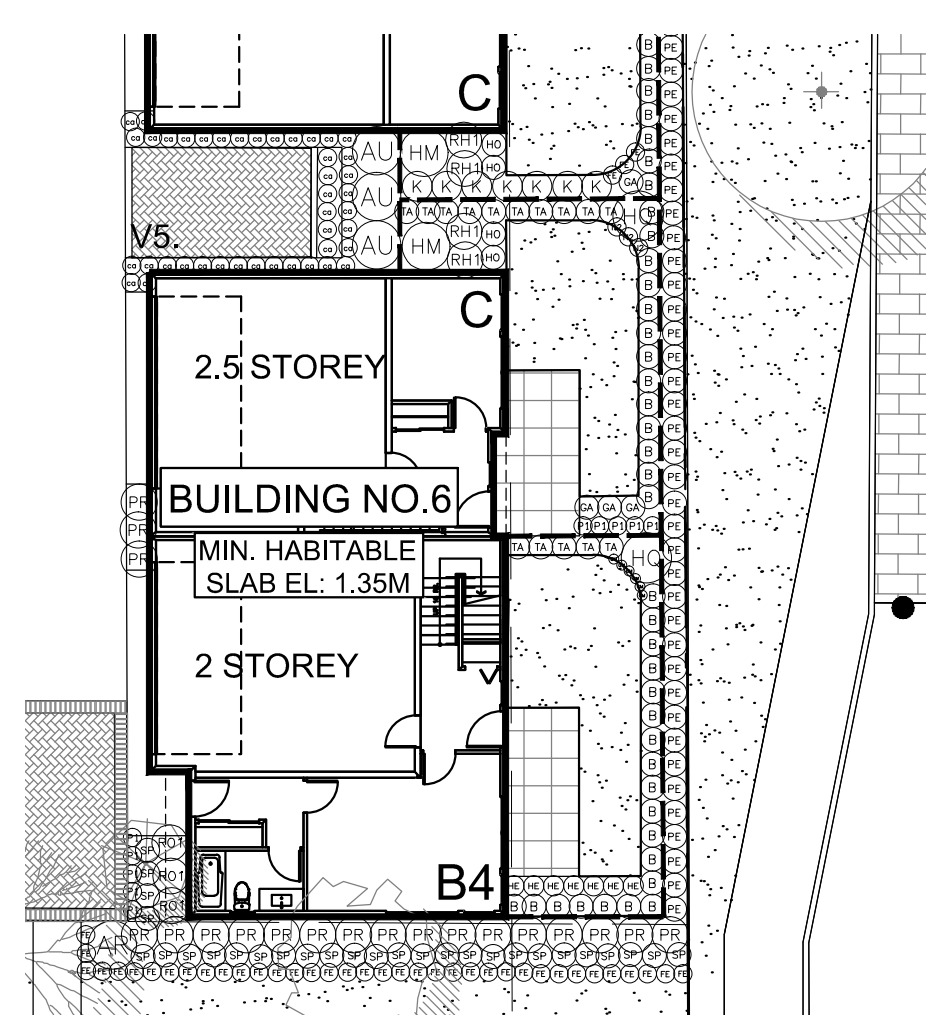
**1 SHRUB PLAN ENLARGEMENT 1**  
1/16"=1'-0"



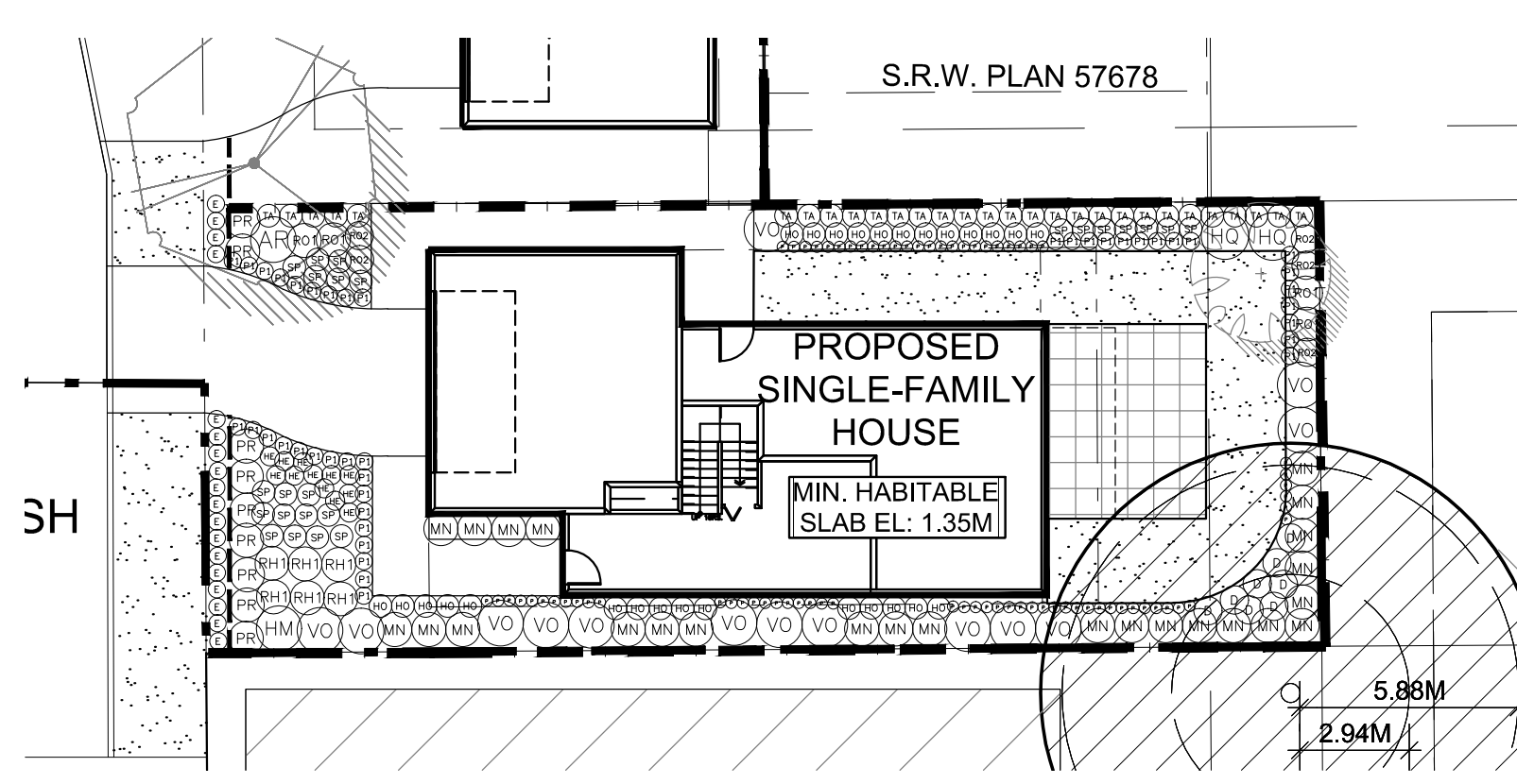
**2 SHRUB PLAN ENLARGEMENT 2**  
1/16"=1'-0"



**3 SHRUB PLAN ENLARGEMENT 3**  
1/16"=1'-0"



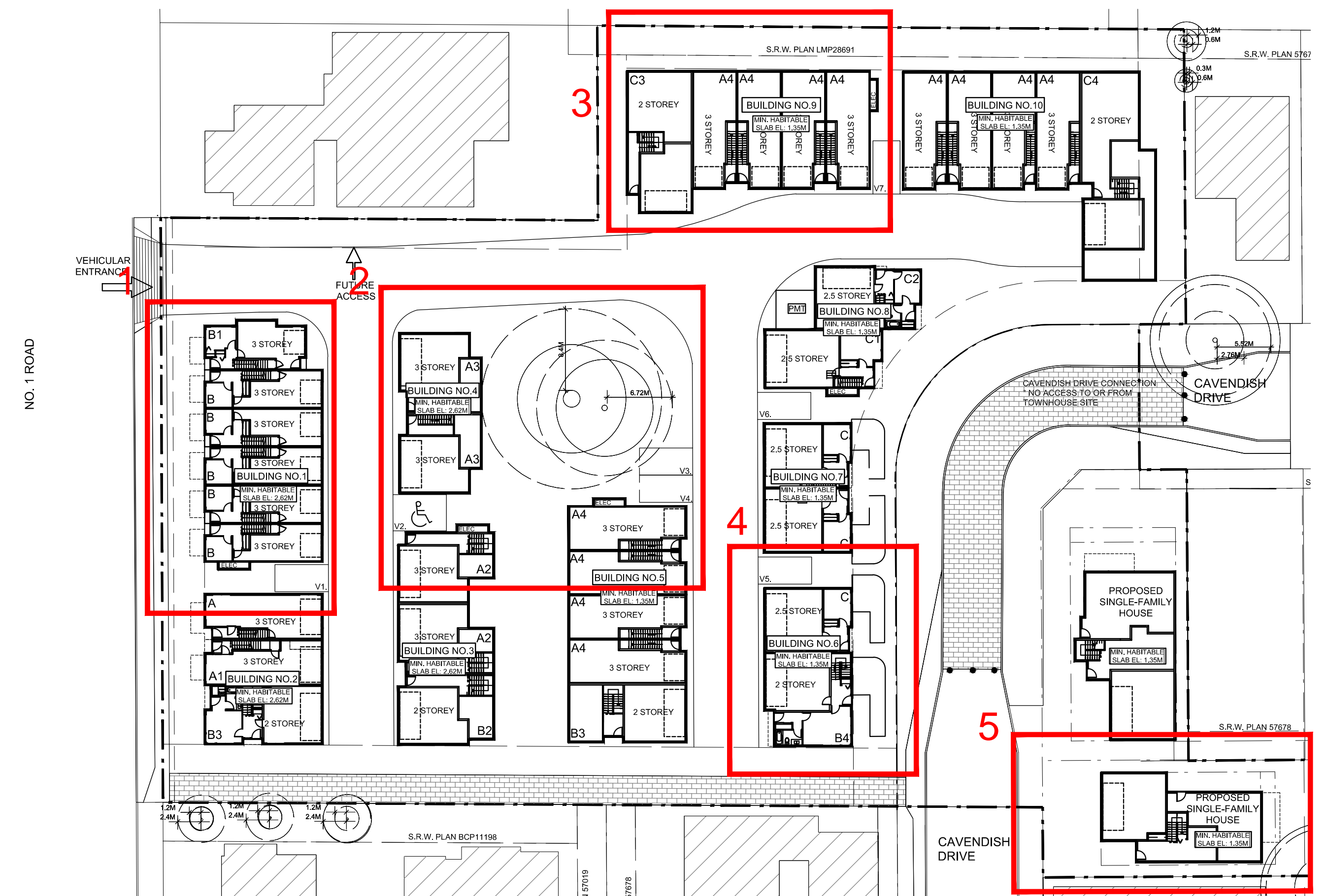
**4 SHRUB PLAN ENLARGEMENT 4**  
1/16"=1'-0"



**5 SHRUB PLAN ENLARGEMENT 5**  
1/16"=1'-0"

PLANT SCHEDULE			PMG PROJECT NUMBER: 19-013	
KEY	QTY	BOTANICAL NAME	COMMON NAME	PLANTED SIZE / REMARKS
<b>SHRUB</b>				
AR		ARBUS UNEDO 'COMPACTA'	COMPACT STRAWBERRY BUSH	#3 POT; 80CM
AU		AUCUBA JAPONICA 'SERRATIFOLIA'	SAWTOOTHED JAPANESE AUCUBA	#3 POT; 50CM
B		BUXUS MICROPHYLLA 'WINTER GEM'	LITTLE-LEAF BOX	#3 POT; 40CM
C		CARYOPTERIS x CLANDONENSIS 'DARK KNIGHT'	BLUEBEARD	#2 POT; 40CM
D		CHOISYA TERNATA 'SUNDANCE'	MEXICAN MOCK ORANGE	#3 POT; 50CM
E		FATSIA JAPONICA	JAPANESE ARALIA	#3 POT
F		HAMAMELIS MOLLIS	CHINESE WITCH HAZEL	#3 POT; 80CM
G		HYDRANGEA MACROPHYLLA 'NIKKO BLUE'	BIGLEAF HYDRANGEA (BLUE)	#3 POT; 80CM
H		HYDRANGEA QUERCIFOLIA	OAKLEAF HYDRANGEA	#3 POT; 80CM
I		KALMIA LATIFOLIA 'ELF'	DWARF MOUNTAIN LAUREL	#3 POT; 50CM
J		MAHONIA NERVOSA	LONGLEAF MAHONIA	#2 POT; 40CM
K		NANDINA DOMESTICA 'FIREPOWER'	FIREPOWER HEAVENLY BAMBOO	#2 POT; 40CM
L		PIERIS JAPONICA 'FOREST FLAME'	PIERIS; WHITE BLOOMS	#3 POT; 50CM
M		PRUNUS LAUROCERASUS 'OTTO LUYKEN'	OTTO LUYKEN LAUREL	#3 POT; 50CM
N		RHODODENDRON 'BOW BELLS'	RHODODENDRON	#3 POT; 50CM
O		RHODODENDRON 'P.J.M.'	RHODODENDRON; LIGHT PURPLE; E. MAY	#3 POT; 50CM
P		ROSA MEIDILAND 'BONICA'	BONICA ROSE	#2 POT; 40CM
Q		ROSA MEIDILAND 'RED'	MEIDILAND ROSE; RED	#2 POT; 40CM
R		SKIMMIA JAPONICA (90% MALE)	JAPANESE SKIMMIA	#2 POT; 30CM
S		SPIRAEA JAPONICA 'LITTLE PRINCESS'	LITTLE PRINCESS SPIRAEA; PINK	#2 POT; 40CM
T		TAXUS X MEDIA 'HILLII'	HILLII YEW	1.2M B&B
U		VACCINIUM OVATUM 'THUNDERBIRD'	EVERGREEN HUCKLEBERRY	#3 POT; 60CM
V		WEIGELA FLORIDA 'PURPUREA'	PURPLE WEIGELA	#3 POT; 60CM
<b>GRASS</b>				
W		CAREX OSHIMENSIS 'EVERGOLD'	EVERGOLD JAPANESE SEDGE	#1 POT
X		FESTUCA OVINA 'GLAUCO'	BLUE FESCUE	#1 POT
Y		MISCANTHUS SINENSIS 'ADAGIO'	ADAGIO DWARF JAP. SILVER GRASS	#2 POT
Z		MISCANTHUS SINENSIS 'GRACILLIMUS'	MAIDEN GRASS	#2 POT
AA		PENNISETUM ALOPECUROIDES 'HAMELIN'	DWARF FOUNTAIN GRASS	#1 POT
AB		PENNISETUM ALOPECUROIDES 'LITTLE BUNNY'	FOUNTAIN GRASS	#1 POT
AC		STIPA TENUISSIMA	MEXICAN FEATHER GRASS	#1 POT
<b>PERENNIAL</b>				
AD		ECHINACEA PURPUREA	PURPLE CONEFLOWER	15CM POT
AE		GERANIUM SANGUINEUM 'JOHN ELSLEY'	GERANIUM; MAGENTA	15CM POT
AF		HEMEROCALLIS 'WHITE TEMPTATION'	DAYLILY; WHITE	#1 POT; 20CM
AG		HOSTA 'PATRIOT'	HOSTA; GREEN AND WHITE VARIEGATED	#1 POT; 1 EYE
AH		LAVENDULA ANGUSTIFOLIA 'MUNSTEAD'	ENGLISH LAVENDER; COMPACT; VIOLET-BLUE	#1 POT
AI		RUDBECKIA FULGIDA VAR SULLIVANTII 'GOLDSTURMRUDBECKIA'; YELLOW	BLACK CHERRY	15CM POT
AJ		STACHYS BYZNATINA 'SILVER CARPET'	LAMB'S EAR	15CM POT
AK		DRYOPTERIS ERYTHROSORA 'BRILLIANCE'	BRILLIANCE AUTUMN FERN	#2 POT; 45CM
AL		ERICA CARNEA 'SPRINGWOOD PINK'	WINTER HEATH; PINK	#1 POT
AM		GAULTHERIA SHALLON	SALAL	#1 POT; 20CM
AN		PACHYSANDRA TERMINALIS	JAPANESE SPURGE	#1 POT; 15CM
AO		POLYSTICHUM MUNITUM	WESTERN SWORD FERN	#1 POT; 25CM

NOTES: \* PLANT SIZES IN THIS LIST ARE SPECIFIED ACCORDING TO THE BC LANDSCAPE STANDARD AND CANADIAN LANDSCAPE STANDARD, LATEST EDITION. CONTAINER SIZES SPECIFIED AS PER CNLA STANDARD. BOTH PLANT SIZE AND CONTAINER SIZE ARE THE MINIMUM ACCEPTABLE SIZES. \* REFER TO SPECIFICATIONS FOR DEFINED CONTAINER MEASUREMENTS AND OTHER PLANT MATERIAL REQUIREMENTS. \* SEARCH AND REVIEW. MAKE PLANT MATERIAL AVAILABLE FOR OPTIONAL REVIEW BY LANDSCAPE ARCHITECT AT SOURCE OF SUPPLY. AREA OF SEARCH TO INCLUDE LOWER MAINLAND AND FRASER VALLEY. \* SUBSTITUTIONS: OBTAIN WRITTEN APPROVAL FROM THE LANDSCAPE ARCHITECT PRIOR TO MAKING ANY SUBSTITUTIONS TO THE SPECIFIED MATERIAL. UNAPPROVED SUBSTITUTIONS WILL BE REJECTED. ALLOW A MINIMUM OF FIVE DAYS PRIOR TO DELIVERY FOR REQUEST TO SUBSTITUTE. SUBSTITUTIONS ARE SUBJECT TO BC LANDSCAPE STANDARD AND CANADIAN LANDSCAPE STANDARD - DEFINITION OF CONDITIONS OF AVAILABILITY. \* ALL LANDSCAPE MATERIAL AND WORKMANSHIP MUST MEET OR EXCEED BC LANDSCAPE STANDARD AND CANADIAN LANDSCAPE STANDARD LATEST EDITION. \* ALL PLANT MATERIAL MUST BE PROVIDED FROM CERTIFIED DISEASE FREE NURSERY. \* BIO-SOLIDS NOT PERMITTED IN GROWING MEDIUM UNLESS AUTHORIZED BY LANDSCAPE ARCHITECT.



NO.	DATE	REVISION DESCRIPTION	DR.
5	19.JUN.24	TREE MANAGEMENT PLAN UPDATED	RJ
4	19.JUN.21	NEW SITE PLAN	RJ
3	19.MAY.24	TREE MANAGEMENT PLAN UPDATED	RJ
2	19.MAY.14	ISSUED FOR DP	RJ
1	19.APR.26	NEW SITE PLAN	RJ

CLIENT:

**BOHAN**  
PROPERTIES

PROJECT:

**TOWNHOUSE DEVELOPMENT**

10140, 10160, 10180 NO. 1 ROAD  
AND 4051, 4068 CAVENDISH DRIVE  
RICHMOND, BC

DRAWING TITLE:

**SHRUB ENLARGEMENT**

DATE: 19.JAN.31 DRAWING NUMBER:

SCALE: 1/16"=1'-0"

DRAWN: RJ

DESIGN: RJ

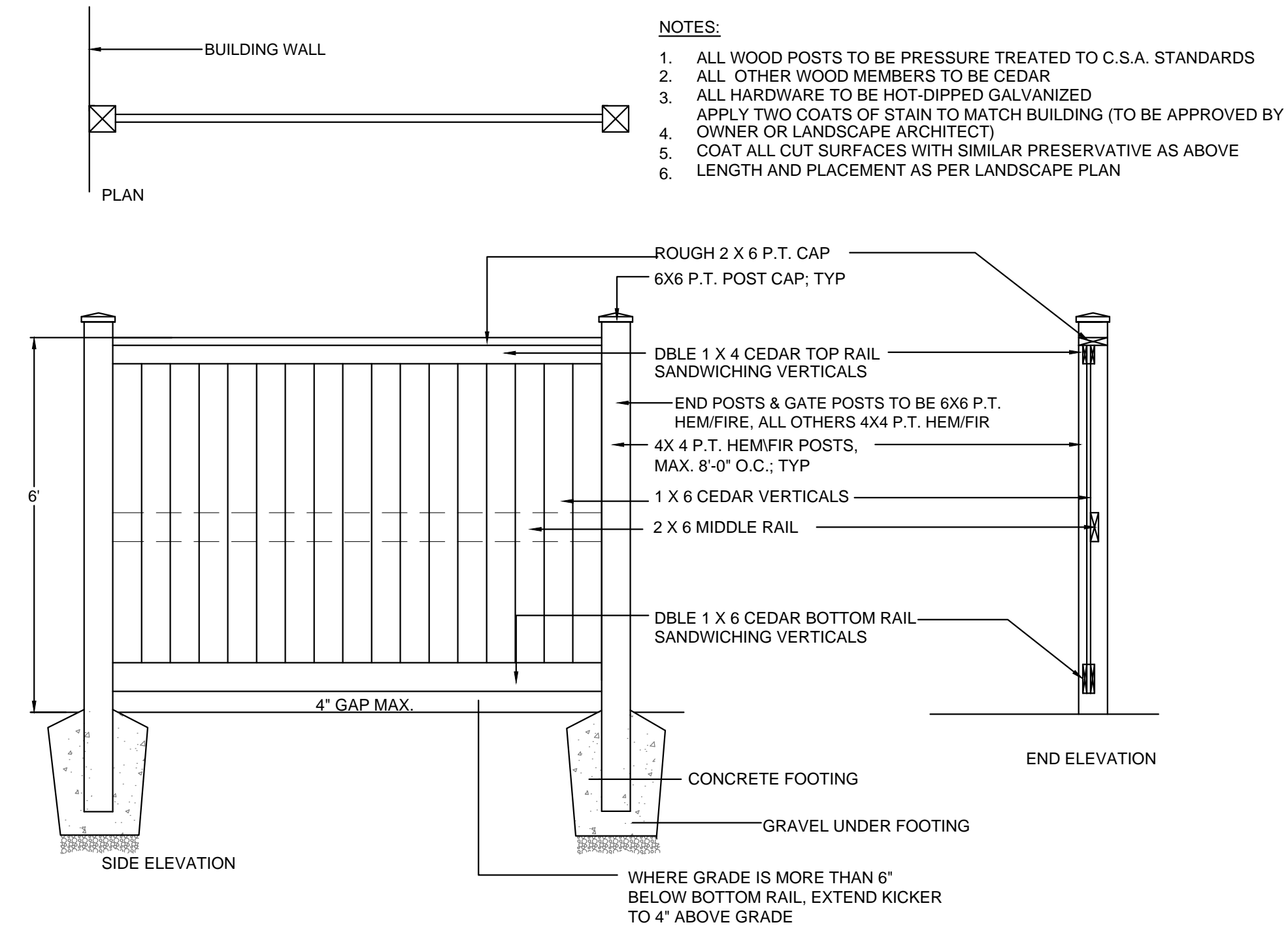
CHK'D: PCM

PMG PROJECT NUMBER: 19013-6

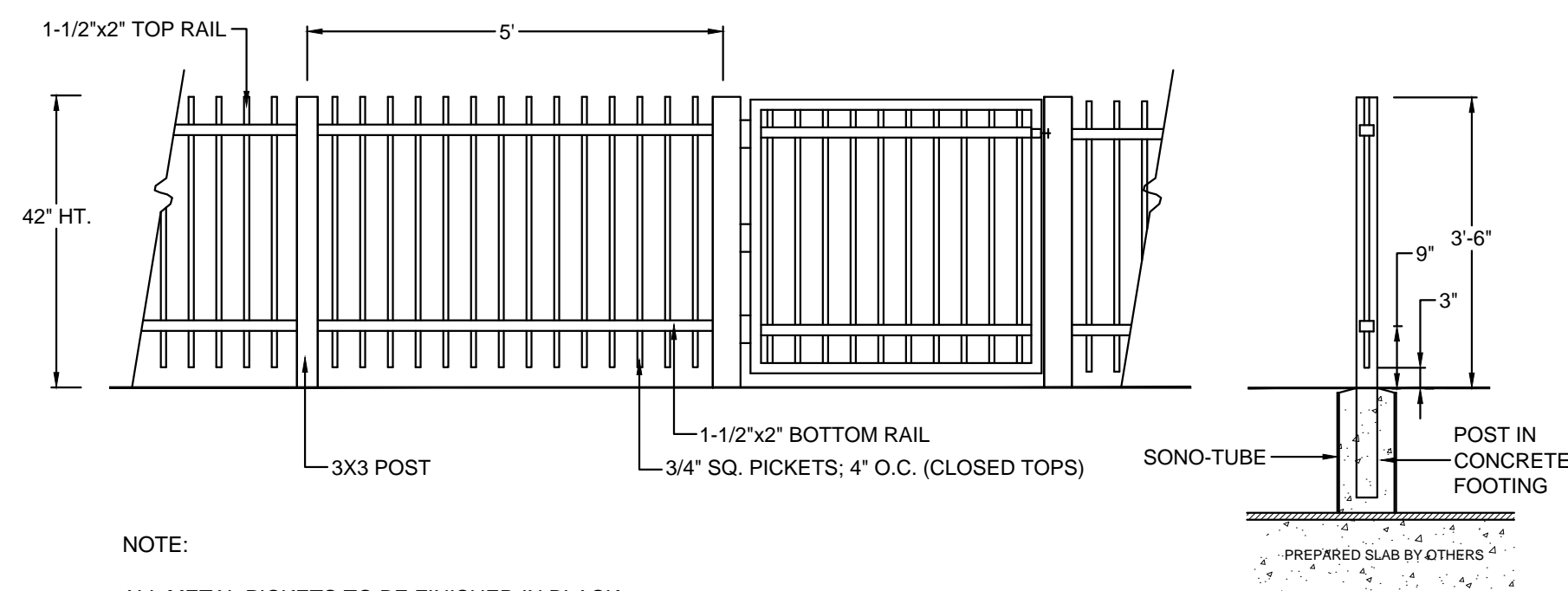
**L2**

OF 8

SEAL:

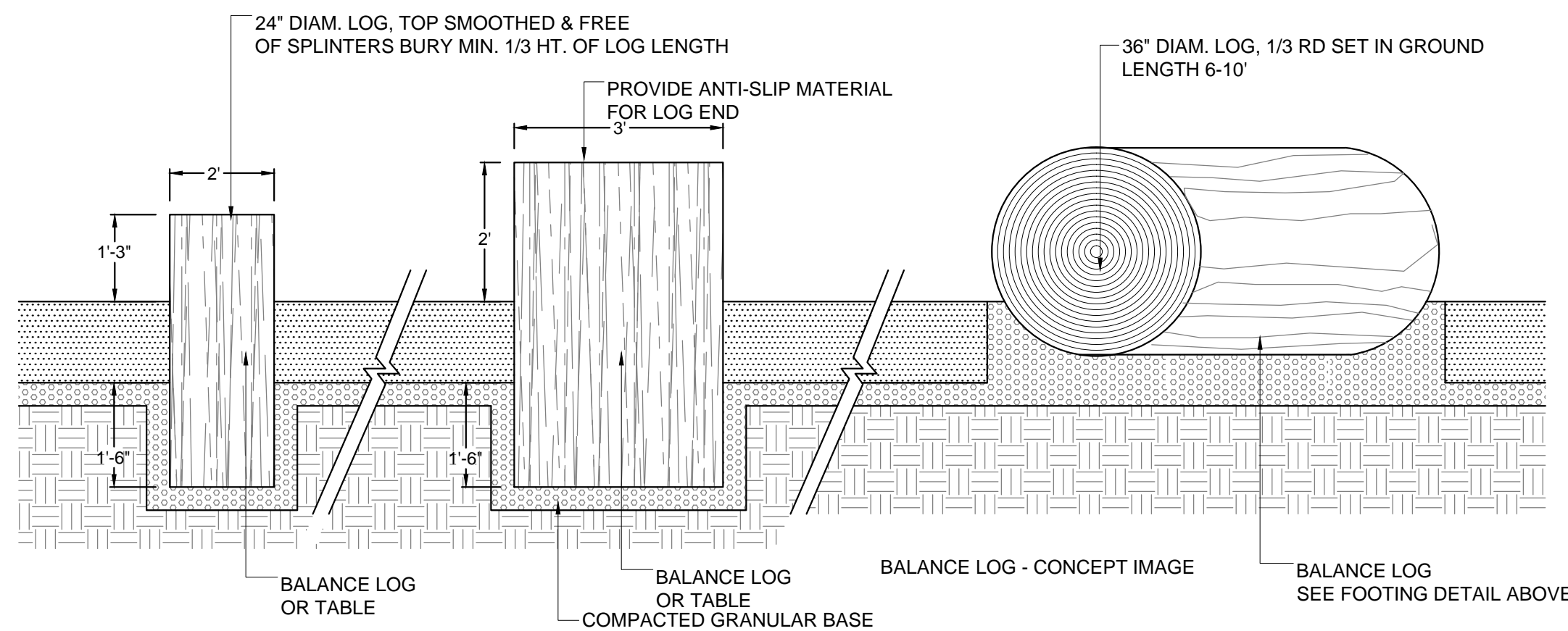
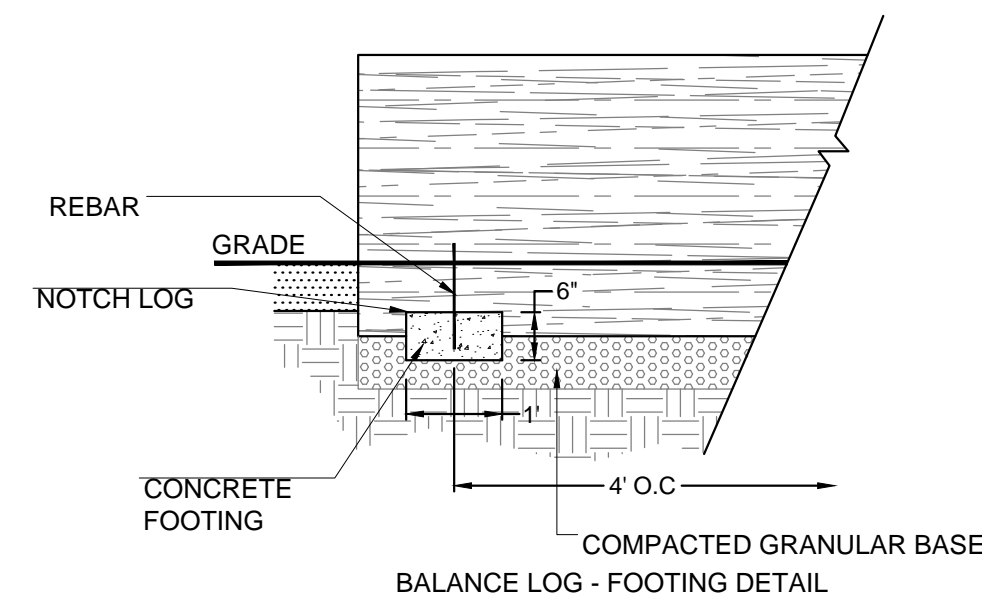


**1 6' HT. WOOD PRIVACY FENCE**  
1/2"=1'-0"

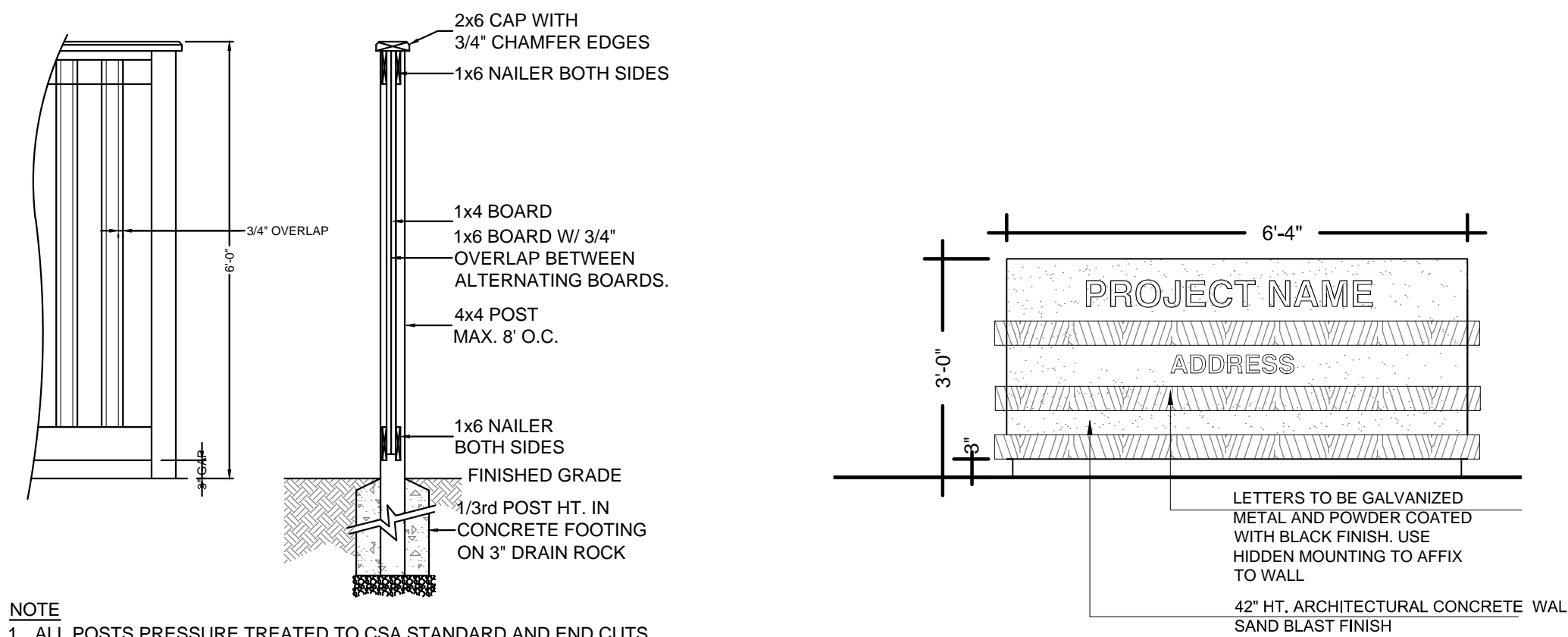


**2 42" HT. METAL FENCE AND GATE**  
1/2"=1'-0"

NOTE:  
ALL METAL PICKETS TO BE FINISHED IN BLACK



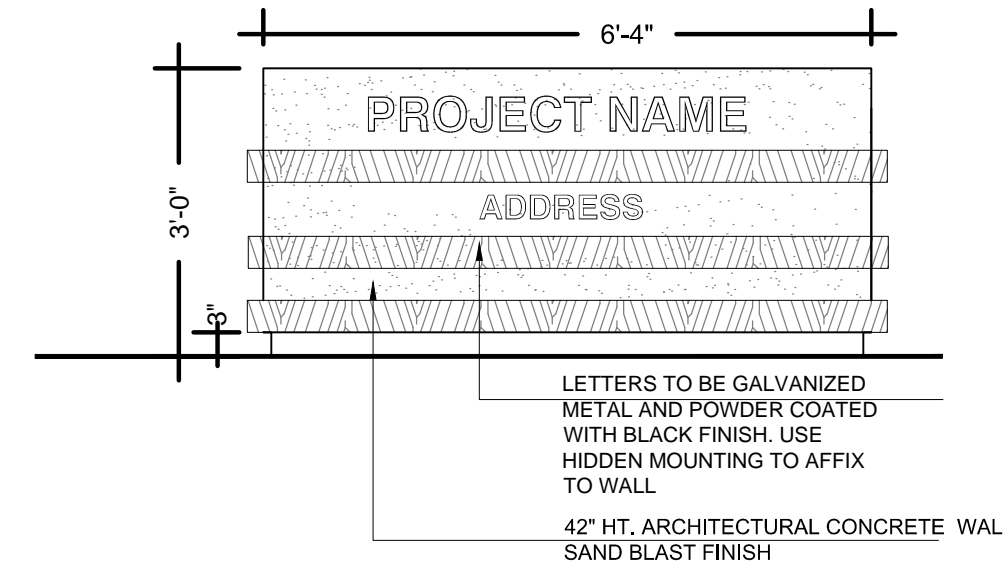
**3 BALANCE LOGS**  
1/2"=1'-0"



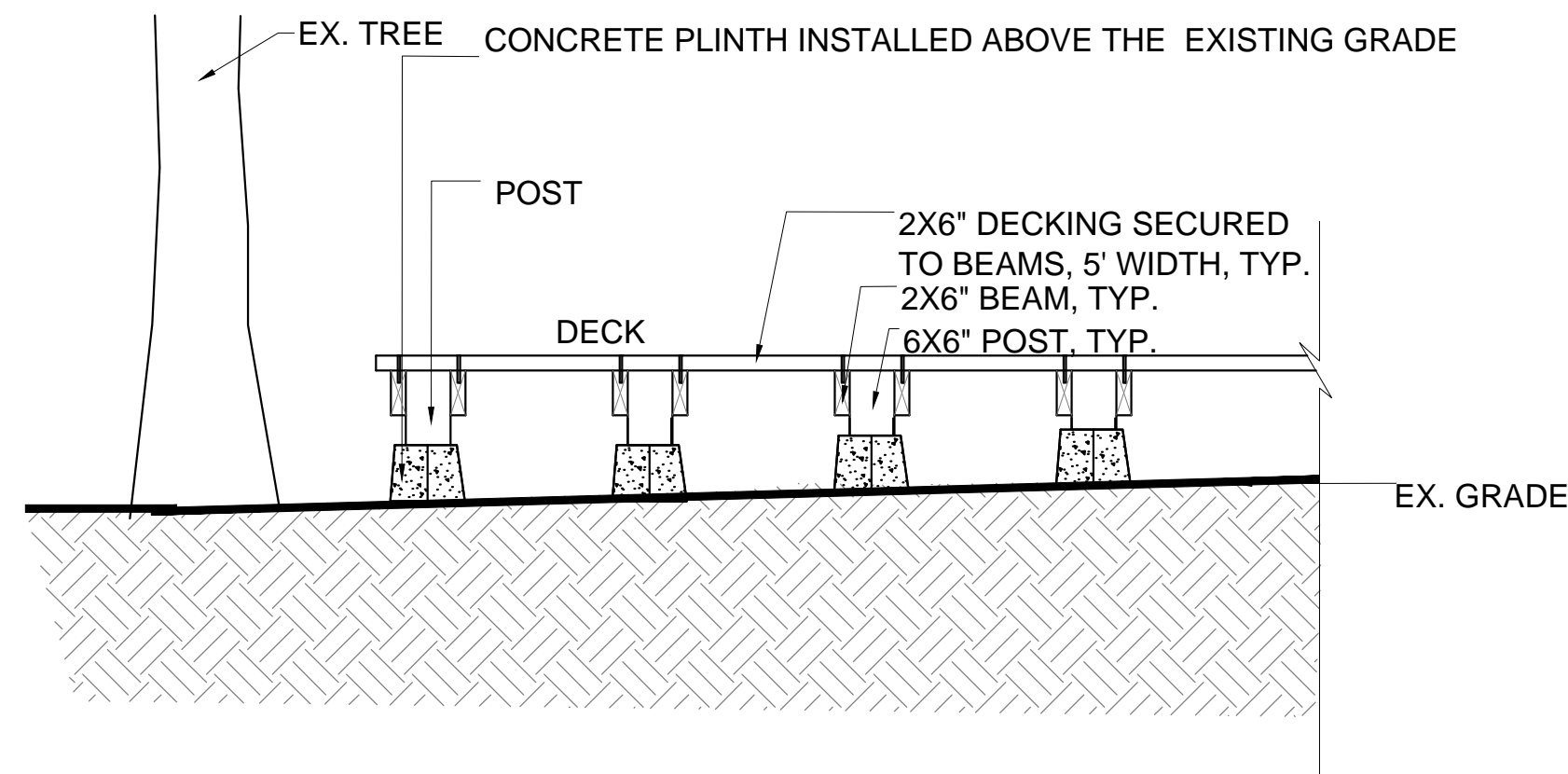
**NOTE**

1. ALL POSTS PRESSURE TREATED TO CSA STANDARD AND END CUTS TREATED WITH PRESERVATIVE.
2. ALL OTHER MEMBERS TO BE CEDAR. #2 (CONSTRUCTION) GRADE MINIMUM.
3. ALL HARDWARE HOT DIPPED GALVANIZED.
4. APPLY 2 COATS EXTERIOR STAIN TO MANUFACTURERS SPECIFICATION. FINISH SELECTION AS APPROVED BY PROJECT ARCHITECT.
5. ALL FENCES TO BE LEVEL. CHANGES IN GRADE TO BE IN 12"-18" STEPS (MAX.). GAPS TO GRADE TO FOLLOW FINISH GRADE. GAP TO BE 3-6".

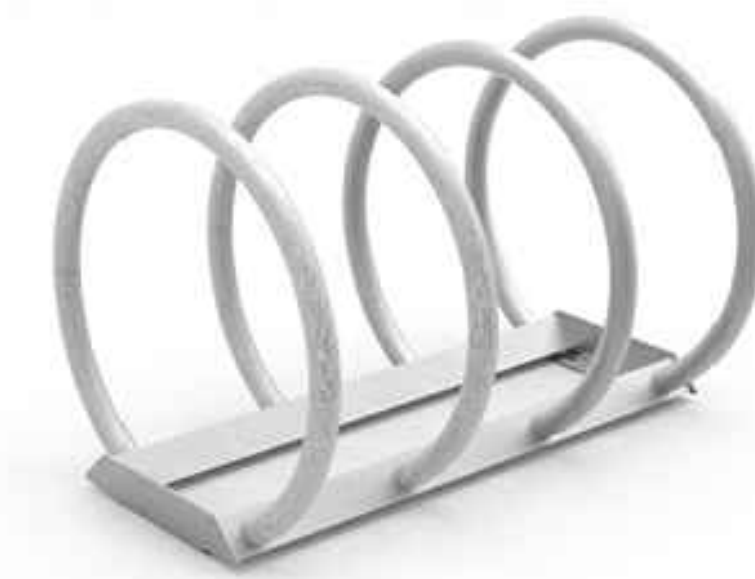
**4 6' HEIGHT SOLID WOOD FENCE**  
1/2"=1'-0"



**5 DEVELOPMENT SIGNAGE**  
1/2"=1'-0"



**6 DECK UNDER THE EXISTING TREE**  
1/2"=1'-0"



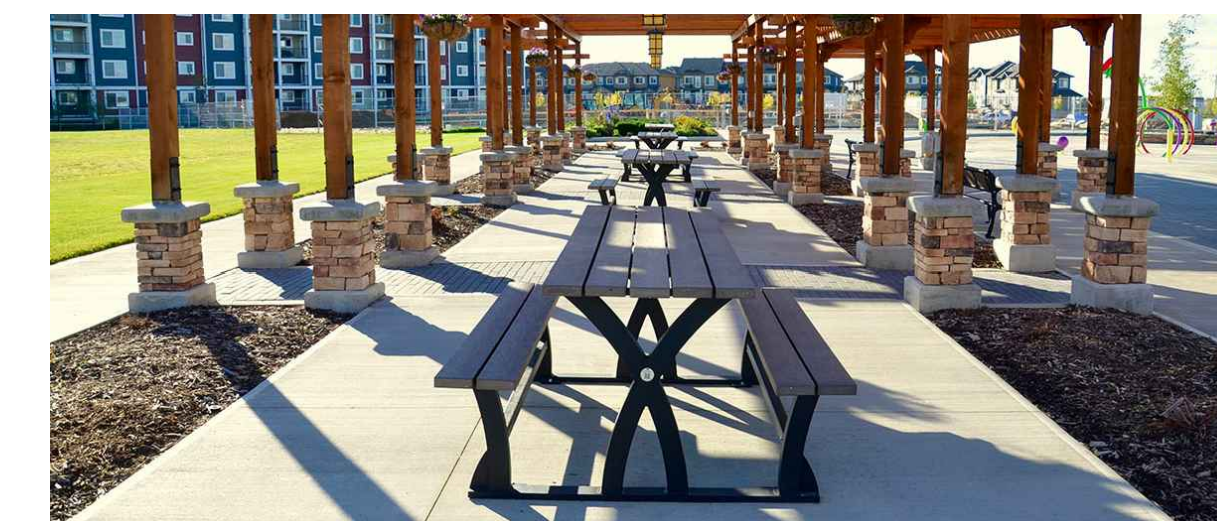
MAGLIN BIKE RACK 350-4-S



WISHBONE BAYVIEW BENCH



WISHBONE BAYVIEW TABLE



WISHBONE BAYVIEW PICNIC TABLE BVPT-6



KOMPAN M7000P RED HOUSE


NO.	DATE	REVISION DESCRIPTION	DR.
5	19.JUN.24	TREE MANAGEMENT PLAN UPDATED	RJ
4	19.JUN.21	NEW SITE PLAN	RJ
3	19.MAY.24	TREE MANAGEMENT PLAN UPDATED	RJ
2	19.MAY.14	ISSUED FOR DP	RJ
1	19.APR.26	NEW SITE PLAN	RJ

CLIENT:

**BOHAN**  
PROPERTIES

PROJECT:

**TOWNHOUSE DEVELOPMENT**

10140, 10160, 10180 NO. 1 ROAD  
AND 4051, 4068 CAVENDISH DRIVE  
RICHMOND, BC


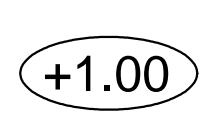
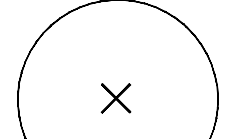
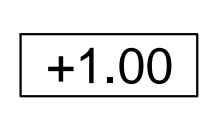
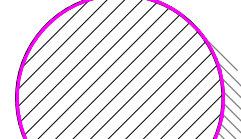
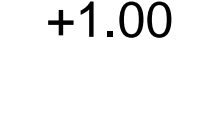

DRAWING TITLE:  
**LANDSCAPE DETAILS**

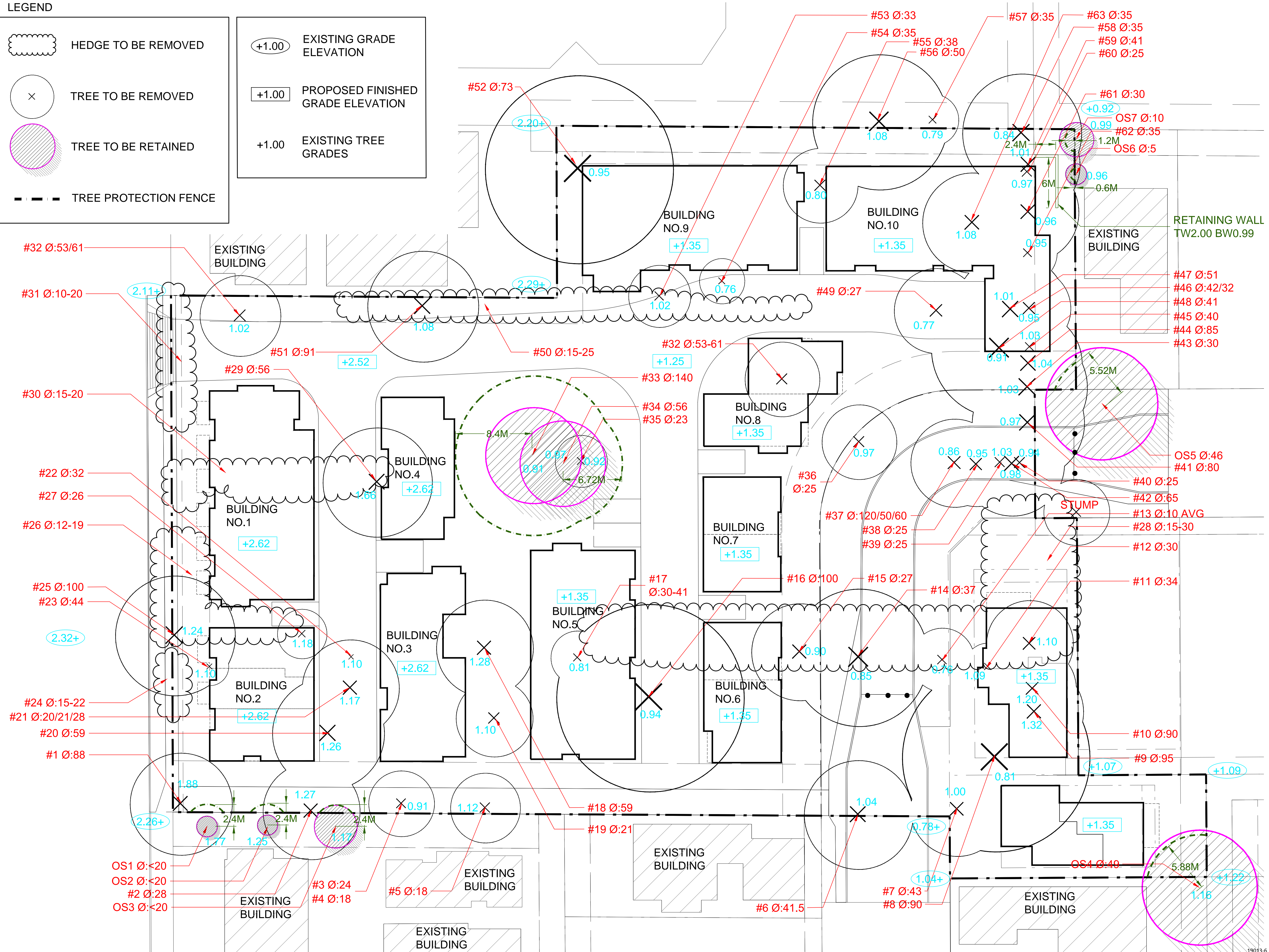
DATE:	19.JAN.31	DRAWING NUMBER:	
SCALE:	AS SHOWN		
DRAWN:	RJ		
DESIGN:	RJ		
CHK'D:	PCM		

**L3**

OF 8

LEGEND

	HEDGE TO BE REMOVED		EXISTING GRADE ELEVATION
	TREE TO BE REMOVED		PROPOSED FINISHED GRADE ELEVATION
	TREE TO BE RETAINED		EXISTING TREE GRADES
	TREE PROTECTION FENCE		



© Copyright reserved. This drawing and design is the property of PMG Landscape Architects and may not be reproduced or used for other projects without their permission.



Suite C100 - 4185 Still Creek Drive  
Burnaby, British Columbia, V5C 6G9  
p: 604 294-0011 ; f: 604 294-0022

SEAL:

NO.	DATE	REVISION DESCRIPTION	DR.
5	19.JUN.24	TREE MANAGEMENT PLAN UPDATED	RJ
4	19.JUN.21	NEW SITE PLAN	RJ
3	19.MAY.24	TREE MANAGEMENT PLAN UPDATED	RJ
2	19.MAY.14	ISSUED FOR DP	RJ
1	19.APR.26	NEW SITE PLAN	RJ

CLIENT:

**BOHAN**  
PROPERTIES

PROJECT:

**TOWNHOUSE DEVELOPMENT**

10140, 10160, 10180 NO. 1 ROAD  
AND 4051, 4068 CAVENDISH DRIVE  
RICHMOND, BC

DRAWING TITLE:

**TREE MANAGEMENT PLAN**

DATE: 19.JAN.31

DRAWING NUMBER:

SCALE: 1/16"=1'-0"

DRAWN: RJ

DESIGN: RJ

CHK'D: PCM

**L4**

OF 8

PMG PROJECT NUMBER:

19-013

# TREE INFORMATION TABLE

Tree #	Species	DBH (cm)	Health & Condition	CRZ (Min) (m)	CRZ (preferred) (m)	Comments/Recommendations
1	Fir	88	Poor	5.28	10.56	<ul style="list-style-type: none"> <li>Previously topped</li> <li>hydro pruned</li> <li>heavily covered in ivy.</li> </ul> <b>Recommend:</b> <ul style="list-style-type: none"> <li>Remove.</li> </ul>
2	Walnut	28	Good-Fair	1.68	3.36	<ul style="list-style-type: none"> <li>Previously topped/pruned.</li> </ul> <b>Recommend:</b> <ul style="list-style-type: none"> <li>Consider for removal.</li> </ul>
3	Pine	24	Poor	1.44	2.88	<ul style="list-style-type: none"> <li>Previously topped.</li> </ul> <b>Recommend:</b> <ul style="list-style-type: none"> <li>Remove</li> </ul>
4	Mtn Ash	18	Poor	1.08	2.16	<b>Recommend:</b> <ul style="list-style-type: none"> <li>Remove</li> </ul>
5	Apple	18	Poor	1.08	2.16	<ul style="list-style-type: none"> <li>Extensive decay.</li> </ul> <b>Recommend:</b> <ul style="list-style-type: none"> <li>Remove</li> </ul>
6	Cherry	41.5	Fair	2.49	4.98	<b>Recommend:</b> <ul style="list-style-type: none"> <li>Consider for removal.</li> </ul>
7	Fir	43	Poor	2.58	5.16	<ul style="list-style-type: none"> <li>1-sided canopy.</li> </ul> <b>Recommend:</b> <ul style="list-style-type: none"> <li>Remove</li> </ul>
8	Poplar	90	Poor	5.4	10.8	<ul style="list-style-type: none"> <li>Large limbs prev. Removed</li> <li>Visible decay.</li> </ul> <b>Recommend:</b> <ul style="list-style-type: none"> <li>Remove</li> </ul>
9	Lombardy Poplar	95	Fair	5.7	11.4	<ul style="list-style-type: none"> <li>Overmature</li> <li>Frequent shedding of limbs likely.</li> </ul> <b>Recommend:</b> <ul style="list-style-type: none"> <li>Consider for removal.</li> </ul>
10	Lombardy Poplar	90	Fair	5.4	10.8	<ul style="list-style-type: none"> <li>Overmature</li> <li>Frequent shedding of limbs likely.</li> </ul> <b>Recommend:</b> <ul style="list-style-type: none"> <li>Consider for removal.</li> </ul>
11	Fir	34	Poor	2.04	4.08	<ul style="list-style-type: none"> <li>Lean towards east.</li> </ul> <b>Recommend:</b> <ul style="list-style-type: none"> <li>Remove</li> </ul>

12	Spruce	30	Good	1.8	3.6	<b>Recommend:</b> <ul style="list-style-type: none"> <li>Consider for removal.</li> </ul>
13	Hazelnut	10 avg	Fair	0.6	1.2	<b>Recommend:</b> <ul style="list-style-type: none"> <li>Consider for removal.</li> </ul>
14	Apple	37	Poor	2.22	4.44	<ul style="list-style-type: none"> <li>4 main stems</li> <li>heavily leaning towards property,</li> <li>heaving roots</li> <li>extensive decay.</li> </ul> <b>Recommend:</b> <ul style="list-style-type: none"> <li>Remove</li> </ul>
15	Walnut	27	Fair	1.62	3.24	<b>Recommend:</b> <ul style="list-style-type: none"> <li>Consider for removal.</li> </ul>
16	Willow	100	Poor	6.0	12.0	<ul style="list-style-type: none"> <li>Deadwood &amp; decay throughout canopy.</li> </ul> <b>Recommend:</b> <ul style="list-style-type: none"> <li>Remove</li> </ul>
17	Golden cedar	30-41	Good-Fair	2.46	4.92	<ul style="list-style-type: none"> <li>Hedge row, 3 stems prev. topped.</li> </ul> <b>Recommend:</b> <ul style="list-style-type: none"> <li>Consider for removal.</li> </ul>
18	Spruce	59	Poor	3.54	7.08	<ul style="list-style-type: none"> <li>Previously topped</li> <li>high heeled roots.</li> </ul> <b>Recommend:</b> <ul style="list-style-type: none"> <li>Remove</li> </ul>
19	Magnolia	21	Poor	1.26	2.52	<ul style="list-style-type: none"> <li>Poor pruning history/canopy structure.</li> </ul> <b>Recommend:</b> <ul style="list-style-type: none"> <li>Remove</li> </ul>
20	Cherry	59	Poor	3.54	7.08	<ul style="list-style-type: none"> <li>Multi-stem</li> <li>visible decay.</li> </ul> <b>Recommend:</b> <ul style="list-style-type: none"> <li>Remove</li> </ul>
21	Birch	20/21/28	Poor	1.68	3.36	<ul style="list-style-type: none"> <li>Multi-ste</li> <li>previously topped</li> <li>visible decay.</li> </ul> <b>Recommend:</b> <ul style="list-style-type: none"> <li>Remove</li> </ul>
22	Spruce	32	Poor	1.92	3.84	<ul style="list-style-type: none"> <li>Previously topped.</li> </ul> <b>Recommend:</b> <ul style="list-style-type: none"> <li>Remove</li> </ul>
23	Cedar	44	Good-Fair	2.64	5.28	<ul style="list-style-type: none"> <li>Slight lean towards property.</li> </ul> <b>Recommend:</b> <ul style="list-style-type: none"> <li>Consider for removal.</li> </ul>

SEAL:

5	19.JUN.24	TREE MANAGEMENT PLAN UPDATED	RJ
4	19.JUN.21	NEW SITE PLAN	RJ
3	19.MAY.24	TREE MANAGEMENT PLAN UPDATED	RJ
2	19.MAY.14	ISSUED FOR DP	RJ
1	19.APR.26	NEW SITE PLAN	RJ

NO. DATE REVISION DESCRIPTION DR.

CLIENT:

**BOHAN**  
PROPERTIES

PROJECT:

**TOWNHOUSE DEVELOPMENT**

**10140, 10160, 10180 NO. 1 ROAD  
AND 4051, 4068 CAVENDISH DRIVE  
RICHMOND, BC**

DRAWING TITLE:

**TREE INFORMATION  
TABLE**

DATE: 19.JAN.31 DRAWING NUMBER:

SCALE:

DRAWN: RJ

DESIGN: RJ

CHK'D: PCM

**L5**

OF 8



Suite C100 - 4185 Still Creek Drive  
Burnaby, British Columbia, V5C 6G9  
p: 604 294-0011 ; f: 604 294-0022

SEAL:

\_\_\_\_\_  
\_\_\_\_\_  
\_\_\_\_\_  
\_\_\_\_\_  
\_\_\_\_\_  
\_\_\_\_\_  
\_\_\_\_\_  
\_\_\_\_\_

5	19.JUN.24	TREE MANAGEMENT PLAN UPDATED	RJ
4	19.JUN.21	NEW SITE PLAN	RJ
3	19.MAY.24	TREE MANAGEMENT PLAN UPDATED	RJ
2	19.MAY.14	ISSUED FOR DP	RJ
1	19.APR.26	NEW SITE PLAN	RJ

NO.	DATE	REVISION DESCRIPTION	DR.
-----	------	----------------------	-----

CLIENT:

**BOHAN**  
PROPERTIES

PROJECT:

**TOWNHOUSE DEVELOPMENT**

**10140, 10160, 10180 NO. 1 ROAD  
AND 4051, 4068 CAVENDISH DRIVE  
RICHMOND, BC**

DRAWING TITLE:

**TREE INFORMATION  
TABLE**

DATE: 19.JAN.31 DRAWING NUMBER:

SCALE:

DRAWN: RJ

DESIGN: RJ

CHK'D: PCM

**L6**

OF 8

24	Holly x 4	15-22	Poor	1.32	2.64	<ul style="list-style-type: none"> <li>Hedge row.</li> </ul> <b>Recommend:</b> <ul style="list-style-type: none"> <li>Remove</li> </ul>
25	Fir	100	Poor	6.0	12.0	<ul style="list-style-type: none"> <li>Previously topped,</li> <li>hydro pruned</li> <li>heavily covered in ivy.</li> </ul> <b>Recommend:</b> <ul style="list-style-type: none"> <li>Remove</li> </ul>
26	Excelsa cedar	12-19	Fair-Poor	1.14	2.28	<ul style="list-style-type: none"> <li>Hedge row.</li> <li>Previously topped</li> <li>Hard pruned.</li> </ul> <b>Recommend:</b> <ul style="list-style-type: none"> <li>Consider for removal.</li> </ul>
27	Birch	26	Very poor	1.56	3.12	<b>Recommend:</b> <ul style="list-style-type: none"> <li>Remove</li> </ul>
28	Excelsa cedar	15-30	Fair	1.8	3.6	<ul style="list-style-type: none"> <li>Hedge row.</li> <li>Previously topped.</li> </ul> <b>Recommend:</b> <ul style="list-style-type: none"> <li>Consider for removal.</li> </ul>
29	Pine	56	Poor	3.36	6.72	<ul style="list-style-type: none"> <li>Previously topped to hedge height.</li> </ul> <b>Recommend:</b> <ul style="list-style-type: none"> <li>Remove</li> </ul>
30	Excelsa / Emerald cedar	15-20	Fair-Poor	1.2	2.4	<ul style="list-style-type: none"> <li>Previously topped.</li> </ul> <b>Recommend:</b> <ul style="list-style-type: none"> <li>Consider for removal.</li> </ul>
31	Excelsa cedar	10-20	Fair-Poor	1.2	2.4	<ul style="list-style-type: none"> <li>Hedge row.</li> <li>Previously topped.</li> </ul> <b>Recommend:</b> <ul style="list-style-type: none"> <li>Consider for removal.</li> </ul>
32	Deodar cedar	53 / 61	Poor	3.66	7.32	<ul style="list-style-type: none"> <li>Twin stem</li> <li>previously topped.</li> </ul> <b>Recommend:</b> <ul style="list-style-type: none"> <li>Remove</li> </ul>
33	Sequoia	140	Fair	8.4	16.8	<ul style="list-style-type: none"> <li>Species is rapid grower</li> </ul> <b>Recommend:</b> <ul style="list-style-type: none"> <li>Retain per City request; install tree protection fencing</li> <li>Arborist supervision required during excavations for adjacent building.</li> </ul>
34	Spruce	56	Poor	3.36	6.72	<b>Recommend:</b> <ul style="list-style-type: none"> <li>Retain per City request; install tree protection fencing</li> </ul>
35	Spruce	23	Poor	1.38	2.76	<ul style="list-style-type: none"> <li>Conflict with proposed amenity area</li> </ul> <b>Recommend:</b> <ul style="list-style-type: none"> <li>Remove</li> </ul>
36	Willow	25	Poor	1.5	3.0	<b>Recommend:</b> <ul style="list-style-type: none"> <li>Remove</li> </ul>

37	Poplar x 3	120 / 50 / 60	Poor	7.2	14.4	<ul style="list-style-type: none"> <li>Row of 3 trees.</li> </ul> <b>Recommend:</b> <ul style="list-style-type: none"> <li>Remove</li> </ul>
38	Cedar x 4	25	Poor	1.5	3.0	<ul style="list-style-type: none"> <li>Row of 4 trees.</li> </ul> <b>Recommend:</b> <ul style="list-style-type: none"> <li>Remove</li> </ul>
39	Dogwood	25	Poor	1.5	3.0	<b>Recommend:</b> <ul style="list-style-type: none"> <li>Remove</li> </ul>
40	Cedar	25	Poor	1.5	3.0	<b>Recommend:</b> <ul style="list-style-type: none"> <li>Remove</li> </ul>
41	Poplar	80	Fair-Poor	4.8	9.6	<b>Recommend:</b> <ul style="list-style-type: none"> <li>Consider for removal.</li> </ul>
42	Polar	65	Fair-Poor	3.9	7.8	<b>Recommend:</b> <ul style="list-style-type: none"> <li>Consider for removal.</li> </ul>
43	Pine	30	Poor	1.8	3.6	<b>Recommend:</b> <ul style="list-style-type: none"> <li>Remove</li> </ul>
44	Poplar	85	Fair-Poor	5.1	10.2	<b>Recommend:</b> <ul style="list-style-type: none"> <li>Consider for removal.</li> </ul>
45	Cedar	40	Poor	2.4	4.8	<b>Recommend:</b> <ul style="list-style-type: none"> <li>Remove</li> </ul>
46	Pine / Maple	42 / 32	Poor	1.92	3.84	<ul style="list-style-type: none"> <li>Codominant trees.</li> </ul> <b>Recommend:</b> <ul style="list-style-type: none"> <li>Remove</li> </ul>
47	Fir	51	Dead	3.06	6.12	<b>Recommend:</b> <ul style="list-style-type: none"> <li>Remove</li> </ul>
48	Willow	41	Poor	2.46	4.92	<ul style="list-style-type: none"> <li>Previously topped.</li> </ul> <b>Recommend:</b> <ul style="list-style-type: none"> <li>Remove</li> </ul>
49	Plum	27	Very poor	1.62	3.24	<ul style="list-style-type: none"> <li>Actively failing</li> <li>broken limbs</li> <li>decay.</li> </ul> <b>Recommend:</b> <ul style="list-style-type: none"> <li>Remove</li> </ul>
50	Holly/ Excelsa cedar	15-25	Poor	1.5	3.0	<ul style="list-style-type: none"> <li>Hedge row.</li> </ul> <b>Recommend:</b> <ul style="list-style-type: none"> <li>Remove</li> </ul>
51	Pine	91	Poor	5.46	10.92	<ul style="list-style-type: none"> <li>Previously topped at several heights</li> <li>twin stem</li> <li>included bark.</li> </ul> <b>Recommend:</b> <ul style="list-style-type: none"> <li>Remove</li> </ul>
52	Willow	73	Very Poor	4.38	8.76	<ul style="list-style-type: none"> <li>Extensive decay.</li> </ul> <b>Recommend:</b> <ul style="list-style-type: none"> <li>Remove</li> </ul>



Suite C100 - 4185 Still Creek Drive  
Burnaby, British Columbia, V5C 6G9  
p: 604 294-0011 ; f: 604 294-0022

SEAL:

53	Fir	33	Poor	1.98	3.96	<ul style="list-style-type: none"> <li>Previously topped</li> <li>decay.</li> </ul> <b>Recommend:</b> <ul style="list-style-type: none"> <li>Remove</li> </ul>
54	Plum	35	Dying	2.16	4.32	<ul style="list-style-type: none"> <li>Failed limbs</li> <li>decay.</li> </ul> <b>Recommend:</b> <ul style="list-style-type: none"> <li>Remove</li> </ul>
55	Willow	38	Very poor	2.28	4.56	<ul style="list-style-type: none"> <li>Multiple stems.</li> </ul> <b>Recommend:</b> <ul style="list-style-type: none"> <li>Remove</li> </ul>
56	Willow	50	Very poor	3.0	6.0	<ul style="list-style-type: none"> <li>Multiple stems</li> <li>Decay.</li> </ul> <b>Recommend:</b> <ul style="list-style-type: none"> <li>Remove</li> </ul>
57	Willow	35	Very poor	2.1	4.2	<ul style="list-style-type: none"> <li>Multiple stems</li> <li>Decay.</li> </ul> <b>Recommend:</b> <ul style="list-style-type: none"> <li>Remove</li> </ul>
58	Willow	35	Very poor	2.1	4.2	<ul style="list-style-type: none"> <li>Multiple stems</li> <li>Decay.</li> </ul> <b>Recommend:</b> <ul style="list-style-type: none"> <li>Remove</li> </ul>
59	Birch	41	Poor	2.46	4.92	<ul style="list-style-type: none"> <li>Twin stems.</li> </ul> <b>Recommend:</b> <ul style="list-style-type: none"> <li>Remove</li> </ul>
60	Willow	25	Very poor	1.5	3.0	<ul style="list-style-type: none"> <li>Multiple stems</li> <li>Decay.</li> </ul> <b>Recommend:</b> <ul style="list-style-type: none"> <li>Remove</li> </ul>
61	Willow	30	Very poor	1.8	3.6	<ul style="list-style-type: none"> <li>Multiple stems</li> <li>Decay.</li> </ul> <b>Recommend:</b> <ul style="list-style-type: none"> <li>Remove</li> </ul>
62	Willow	35	Very poor	2.16	4.32	<ul style="list-style-type: none"> <li>Multiple stems</li> <li>Decay.</li> </ul> <b>Recommend:</b> <ul style="list-style-type: none"> <li>Remove</li> </ul>
63	Willow	35	Very poor	2.16	4.32	<ul style="list-style-type: none"> <li>Multiple stems</li> <li>Decay.</li> </ul> <b>Recommend:</b> <ul style="list-style-type: none"> <li>Remove</li> </ul>
OS1	Excelsa	<20	Good	1.2	2.4	<ul style="list-style-type: none"> <li>Neighbour's property.</li> </ul> <b>Recommend:</b> <ul style="list-style-type: none"> <li>Retain; install tree protection fencing at property line</li> </ul>

OS2	Excelsa	<20	Good	1.2	2.4	<ul style="list-style-type: none"> <li>Neighbour's property.</li> </ul> <b>Recommend:</b> <ul style="list-style-type: none"> <li>Retain; install tree protection fencing at property line</li> </ul>
OS3	Fir	<20	Good	1.2	2.4	<ul style="list-style-type: none"> <li>Neighbour's property.</li> </ul> <b>Recommend:</b> <ul style="list-style-type: none"> <li>Retain; install tree protection fencing at property line</li> </ul>
OS4	Deodar cedar	49	Good	2.94	5.88	<ul style="list-style-type: none"> <li>Neighbour's property.</li> </ul> <b>Recommend:</b> <ul style="list-style-type: none"> <li>Retain; install tree protection fencing</li> <li><b>Arborist supervision is recommended during excavations required for proposed single family house</b></li> </ul>
OS5	Maple	46	Good	2.76	5.52	<ul style="list-style-type: none"> <li>Blvd./Neighbour's property.</li> </ul> <b>Recommend:</b> <ul style="list-style-type: none"> <li>Retain; install tree protection fencing</li> </ul>
OS6	Walnut	5	Good	0.3	0.6	<ul style="list-style-type: none"> <li>Neighbour's property.</li> </ul> <b>Recommend:</b> <ul style="list-style-type: none"> <li>Retain; install tree protection fencing at property line</li> </ul>
OS7	Lilac	10	Good	0.6	1.2	<ul style="list-style-type: none"> <li>Neighbour's property.</li> </ul> <b>Recommend:</b> <ul style="list-style-type: none"> <li>Retain; install tree protection fencing at property line</li> </ul>

5	19.JUN.24	TREE MANAGEMENT PLAN UPDATED	RJ
4	19.JUN.21	NEW SITE PLAN	RJ
3	19.MAY.24	TREE MANAGEMENT PLAN UPDATED	RJ
2	19.MAY.14	ISSUED FOR DP	RJ
1	19.APR.26	NEW SITE PLAN	RJ

NO. DATE REVISION DESCRIPTION DR.

CLIENT:

**BOHAN**  
PROPERTIES

PROJECT:

**TOWNHOUSE DEVELOPMENT**

**10140, 10160, 10180 NO. 1 ROAD  
AND 4051, 4068 CAVENDISH DRIVE  
RICHMOND, BC**

DRAWING TITLE:

**TREE INFORMATION  
TABLE**

DATE: 19.JAN.31 DRAWING NUMBER:

SCALE:

DRAWN: RJ

DESIGN: RJ

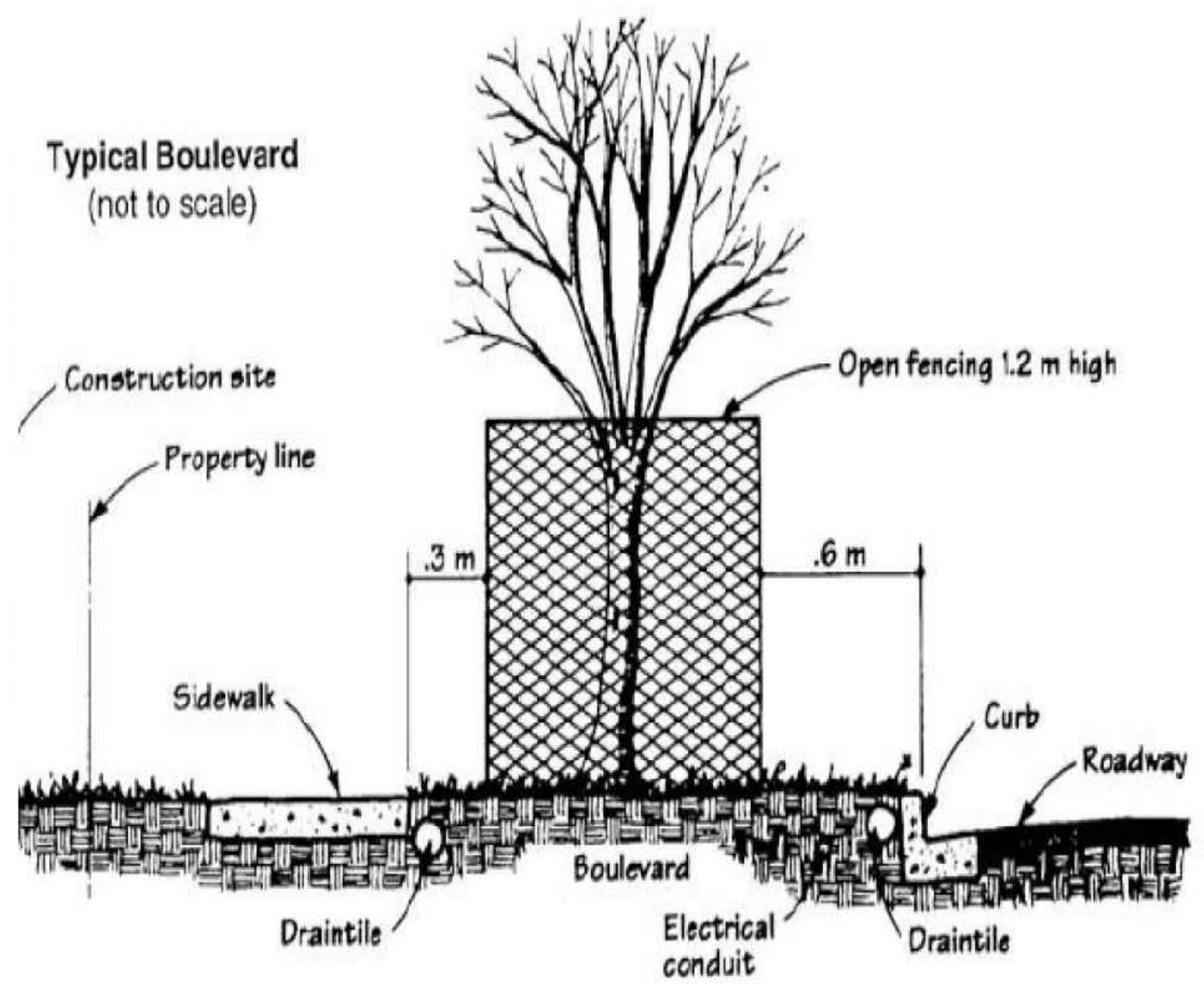
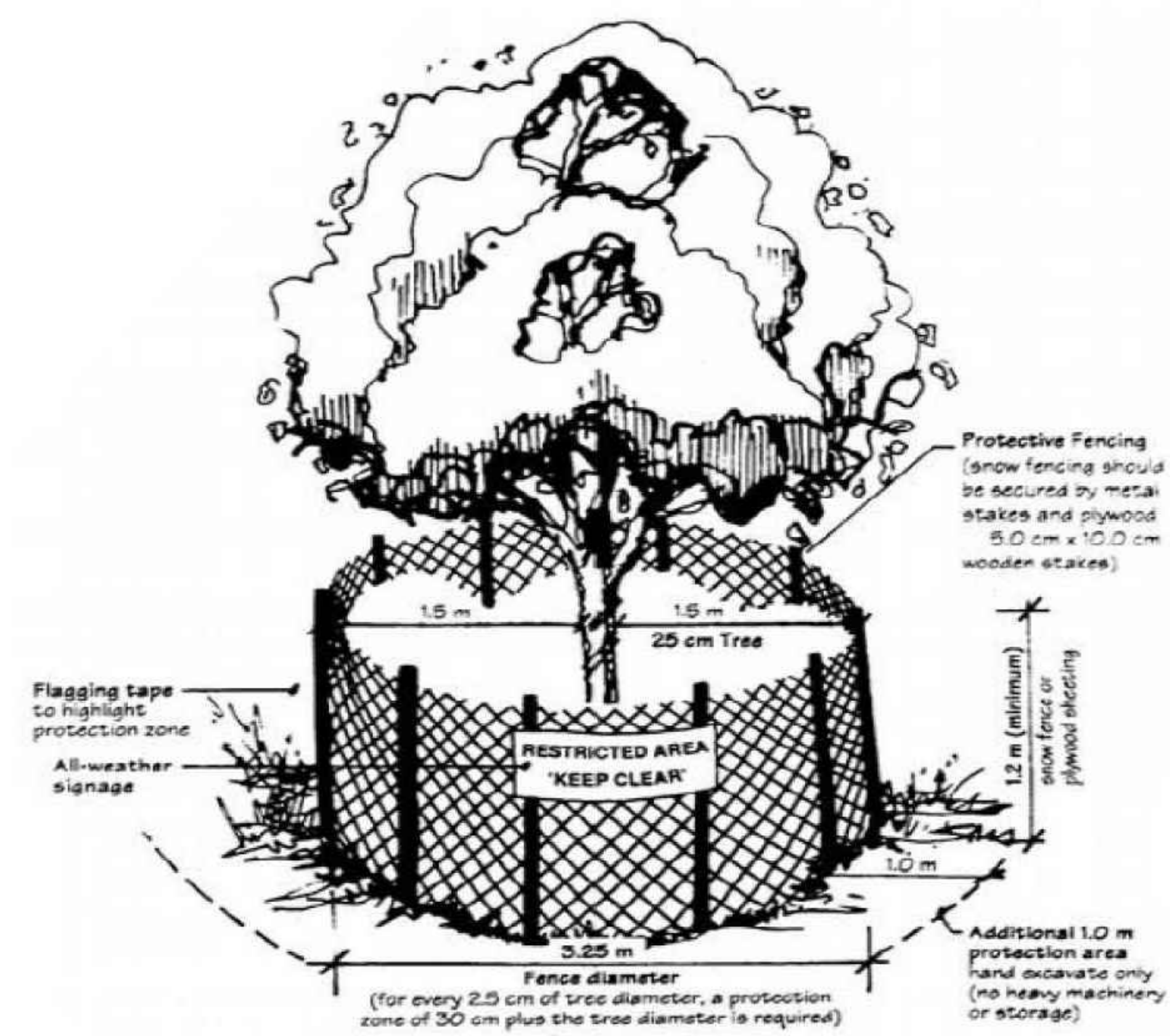
CHK'D: PCM

**L7**

**OF 8**

SEAL:

SUITABLE REPLACEMENT TREES	
SPECIES	
COMMON NAME	BOTANICAL NAME
ACER PALMATUM	JAPANESE MAPLE
ACER RUBRUM 'RED SUNSET'	RED SUNSET MAPLE
AMELANCHIER x GRANDIFLORA 'AUTUMN BRILLIANCE'	AUTUMN BRILLIANCE SERVICEBERRY
CERCIDIPHYLLUM JAPONICUM	KATSURA TREE
CORNUS KOUSA 'CHINENSIS'	CHINESE KOUSA DOGWOOD
LIQUIDAMBAR STYRACIFLUA 'SLENDER SILHOUETTE'	SLENDER SILHOUETTE SWEETGUM
LIQUIDAMBAR STYRACIFLUA 'WORPLESDON'	WORPLESDON SWEET GUM
PINUS NIGRA 'ARNOLD SENTINEL'	ARNOLD SENTINEL AUSTRIAN BLACK PINE
PSEUDOTSUGA MENZIESII	DOUGLAS FIR
PYRUS CALLERYANA 'CHANTICLEER'	CHANTICLEER PEAR
QUERCUS PALUSTRIS 'GREEN PILLAR'	GREEN PILLAR PIN AK



1 TREE PROTECTION BARRIER

NO.	DATE	REVISION DESCRIPTION	DR.
5	19.JUN.24	TREE MANAGEMENT PLAN UPDATED	RJ
4	19.JUN.21	NEW SITE PLAN	RJ
3	19.MAY.24	TREE MANAGEMENT PLAN UPDATED	RJ
2	19.MAY.14	ISSUED FOR DP	RJ
1	19.APR.26	NEW SITE PLAN	RJ

CLIENT:

**BOHAN**  
PROPERTIES

PROJECT:

**TOWNHOUSE DEVELOPMENT**

10140, 10160, 10180 NO. 1 ROAD  
AND 4051, 4068 CAVENDISH DRIVE  
RICHMOND, BC

DRAWING TITLE:

**TREE MANAGEMENT  
DETAIL**

DATE: 19.JAN.31 DRAWING NUMBER:

SCALE: **L8**

DRAWN: RJ OF 8

DESIGN: RJ

CHK'D: PCM PMG PROJECT NUMBER: 19-013